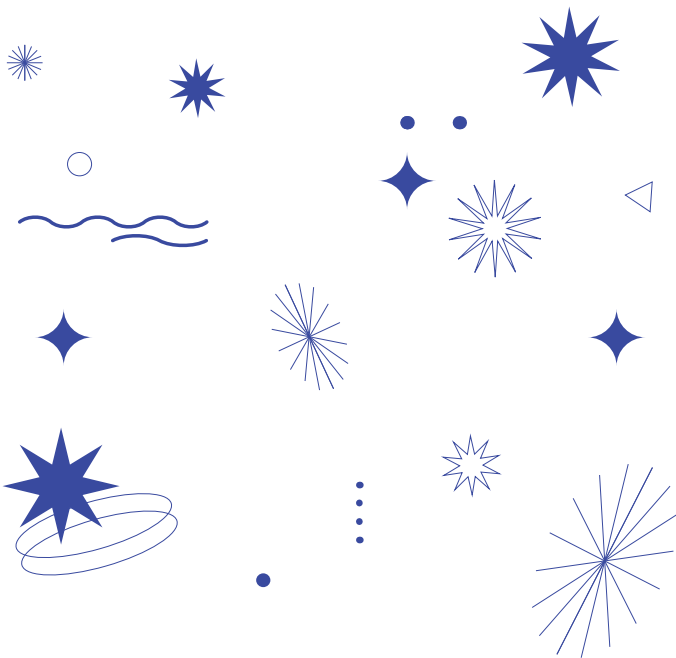


EVERYTHING
YOU WANT TO
KNOW ABOUT
the **PORTFOLIO**



◆ — *and* **ADMISSIONS AT** — ◆
MINERVA ART ACADEMY



**MINERVA
ART
ACADEMY**

CONTENT

6
**ABOUT
MINERVA
ART ACADEMY**

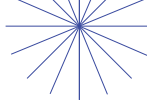
10
**ABOUT
THE
PORTFOLIO
& ADMISSIONS**

13
**MOTIVATION
&
QUESTIONS**

14
NOTES

26
**OTHER
IMPORTANT
INFORMATION**

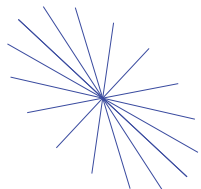
ABOUT MINERVA ART ACADEMY



Students can do a preliminary course or portfolio coaching with us, to prepare for one of our bachelor programs.



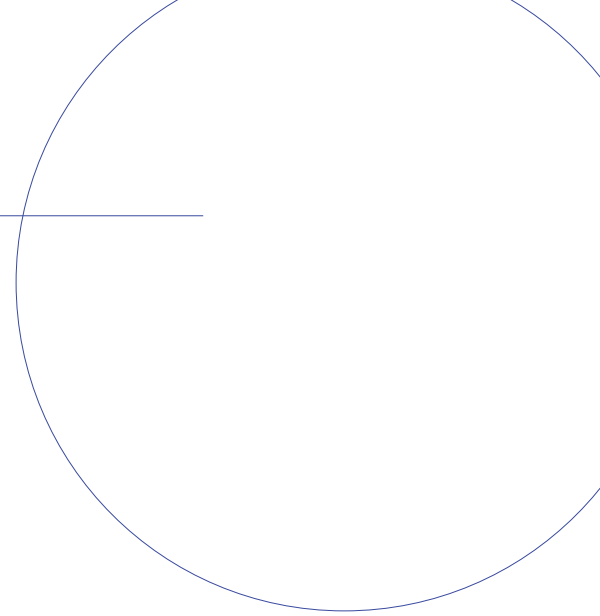
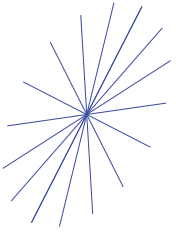
Detailed information: www.hanze.nl/minerva



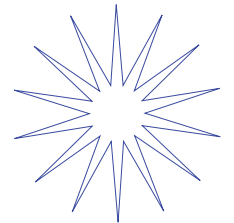
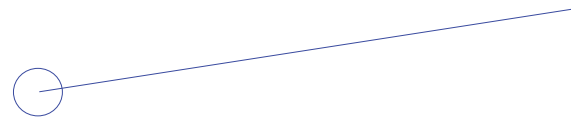
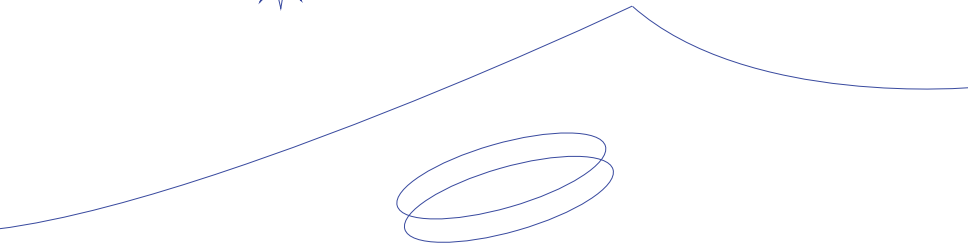
Minerva Art Academy is one of the eighteen schools of the Hanze University of Applied Sciences. Studying here means becoming part of a tolerant and open, international learning community, a community that is at the heart of society. In Groningen we offer the bachelor programs Fine Art, Design and Fine Art and Design in Education. The first two are taught in English, where possible partly Dutch. The dutch bachelor degree in Popular Culture is located in Leeuwarden. As a student, you get every opportunity to participate in projects within and outside the academy. You participate in artistic assignments and research and you are given the opportunity to share your work with an interested audience. With us you learn more than just making beautiful things. You come here to learn, play, experiment and reflect. You choose your own position and discover which role suits you. Our students look for the edges of the mainstream and art disciplines mingle. Making is always the starting point. The development of your own artistic practice is linked to the social context in which we work.

We offer a broad and diverse study programme at several locations, within which our four bachelor programmes have a strong identity and find each other in joint components. Designers, visual artists, art teachers and performers work together in project weeks, external assignments, research and innovation workshops, exchange programs and the OffCourses. We meet in the studios, workplaces and in our fourteen extensive workshops.

The young student cities of Groningen and Leeuwarden offer our students a wonderful playing field with a highly developed cultural field, connection with both the region and international themes and every opportunity for young students to meet each other.



**“All our students share a passion for art and / or design,
an investitive attitude and ambition to determine their
own position in the world.”**



ABOUT THE PORTFOLIO & ADMISSIONS

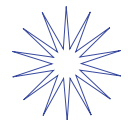


To apply for one of our programs, you need to provide us with a digital portfolio. A portfolio is a wide and varied collection and representation of your artistic work. This could be drawings, sketches and paintings, sculptures, installations, photographs or designs in various stages, whether it's graphic design, typography, scenography or spatial design. You could include your sources of inspiration, material experiments or registrations of a performance, video, film or audio works also writings, poetry or music might be relevant to include, or scans from your sketchbook and photographs of an exhibition you've made. Anything that shows your current skills and ideas. And more importantly, your personality and what interests you.

We're not only interested in the final products and end results, but just as much in how you got there, in the making process. When you include cooperative work, indicate what your part was in this. Provide every image with relevant information: material, size and year of production. As a guideline, the work should not be older than four years. For the portfolio there are no restrictions for visual form and content. The digital file format should be PDF.

The admissions committee mainly wants to find out who you are. You can see your portfolio as a story, your story, or 'conversation piece' in which you show what your thought processes are or how you arrived at a final product. The conversation can be about your interests, your curiosity, why you like to work with a certain material or the experiments you did. We are interested to know which subjects you like or whether you feel involved in what is going on in the world or not.

If you include work that was made for school assignments, make sure to also add self-initiated works to your portfolio, to keep it closer to yourself.



We welcome a large quantity of work. Check our website for details, quantities may vary per course. Be selective. For example, if you've made 100 model drawings or logo proposals, make a selection that shows variety. You can also play with the order in which you present your work. A portfolio is not necessarily chronological. If you have a website, make sure you provide us with the link. But you cannot substitute that for the portfolio for the admission, which should be in PDF format.

- PDF format (max 50 MB)
- Good quality pictures
- Use links for video (vimeo/YouTube)
- Add info (size, material, date, title)
- Show diversity
- Recent work (< 4 years)
- Show process (sketches)
- Between 20 and 100 works (but be selective)
- Bio
- Motivation letter

Specific information bachelors

Detailed information: www.hanze.nl/minerva



MOTIVATION

Part of your application is writing a motivation letter. In this motivation letter you can explain why you want to apply for one of our bachelors. Things to consider when writing:

1. Make your portfolio as personal as you want.
2. Motivate your choice for the bachelor program you apply for.
3. Tell your story and why you want to study at our academy.
4. What do you hope to learn and do?
5. What are your interests in the broadest sense of the word.
6. Don't be afraid to make a statement.
7. Who or what are your sources of inspiration and why?
8. What are your ambitions?
9. All that can change during your study at the academy, but what are your dreams at the moment?

QUESTIONS?

**Do you still have questions after reading this booklet?
You will find additional information for each program
on the website.**

www.hanze.nl/minerva

Studyprogram related questions

If you have specific questions related to one of our study programmes, you can contact Minerva Art Academy via email: bachelorminervabkv@org.hanze.nl



NOTES











OTHER IMPORTANT INFORMATION



Visiting addresses

Minerva Art Academy

Gedempte Zuiderdiep 158
9711 HN Groningen
Phone: +31 50 595 1201
Email: bachelorminervabkv@org.hanze.nl.

Praediniussingel 59
9711 AG Groningen
Phone: +31 50 595 1255
Email: bachelorminervabkv@org.hanze.nl.

Minerva Academy for Popular Culture

Achter de Hoven 23
8933 AG Leeuwarden
Telefoon: (058) 292 1600
Email: popcultuur@org.hanze.nl

Mailing address

Hanze University of Applied Sciences
Minerva Art Academy
Postbus 1329
9701 BH Groningen
The Netherlands

Parking

Minerva Art Academy is located in the city centre of Groningen. When you visit the academy, you can park on the Praediniussingel or on the Pottebakkersrijge (attention: this is a payed parking area). Another option is to park at Parking garage Westerhaven. This is at about 5 minutes walking distance from Minerva Art Academy.



**EVERYTHING
YOU WANT TO KNOW
ABOUT THE PORTFOLIO
& ADMISSIONS**



Published by:

Minerva Art Academy January 2022

Text:

Diana Bont

Design:

Studio Minerva / Jemin Kim

Edition:

2000

Printed by:

MarneVeenstra

Paper:

120 gr. hout vrij offset

Typeface :

Neutro, Neue Haas Grotesk Display Pro, Olive Village

© 2022 MINERVA ART ACADEMY All rights reserved.



FIND US ON INSTAGRAM!

DESIGN



FINE ART

POPULAR CULTURE

**FINE ART AND DESIGN — ♦
♦♦♦ ————— IN EDUCATION**



MINERVA ART ACADEMY

Gedempte Zuiderdiep 158
9711 HN Groningen
+31 50 595 1201

bachelorminervabkv@org.hanze.nl

Praediniussingel 59
9711 AG Groningen
+31 50 595 1255

bachelorminervabkv@org.hanze.nl